



POSITION 34° 44'  
**FURUNO®**  
WGS84 135° 21'

34° 44.449' N  
135° 21.219' E

RNG 3.46 nm  
BRG 216°  
SOG 8.4 kt  
COG 206.1°

# GPS

*Global Positioning System*

**MARINE GPS NAVIGATOR**

## GP-150



The future today with FURUNO's electronics technology.

**FURUNO ELECTRIC CO., LTD.**

9-52 Ashihara-cho, Nishinomiya City, Japan Phone: +81 (0)798 65-2111  
Fax: +81 (0)798 65-4200, 66-4622 URL: [www.furuno.co.jp](http://www.furuno.co.jp)

Catalogue No. N-000

TRADE MARK REGISTERED  
MARCA REGISTRADA

## GP-150 MARINE GPS NAVIGATOR

FURUNO GP-150 is a GPS navigator designed for the SOLAS ships according to the GPS performance standard IMO Res MSC.112(73) and associated IEC standards required on and after July 1, 2003. It is a highly reliable standalone EPFS (electronic position-fixing system) that feeds positioning information to AIS, radar, VDRs, etc.

Receiver dependability is improved by fault detection using five satellites, i.e., Receiver Autonomous Integrity Monitoring (RAIM) that shows the integrity status in Safe, Caution, and Unsafe levels. These status are given with respect to user selected accuracy level, 10 m or 100 m. RAIM also works on DGPS signals.

Display mode is selectable from VideoPlotter, Text, Highway, etc. In the highway mode, you can intuitively see how to steer and where the next waypoint is located relative to your ship. It is useful when you are following a series of waypoints along a planned route.

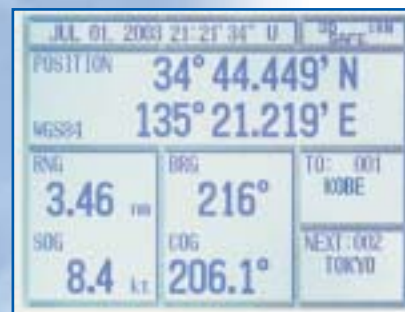
WAAS is standard fitted to improve the position accuracy and DGPS is optionally available with an internal or external differential receiver.

The GP-150 consists of an antenna unit and display unit. The display unit is a 6" silver bright LCD offering optimum viewing under the direct sunlight. Dual configuration with a second system provides a backup or remote operation to ensure system availability.

**VideoPlotter mode**



**Text mode**



**Highway mode**



**Steering mode**



# to SOLAS carriage requirements as a device and as a sensor for AIS, Radar, VDR, etc.



GP-150  
Display Unit



GPS/WAAS Antenna:  
(standard)



DGPS Antenna:  
(option)

## DUAL CONFIGURATION

GP-150 has an unique function "Dual configuration". In this configuration, an additional display unit can be connected for backup or as a second station. The data having good receiving condition is automatically selected in order to send more accurate position data to other equipment.



GP-150  
DUAL

## Augmentation

The GPS accuracy can be enhanced by a proper augmentation system. The two methods, WAAS and DGPS are basically the same in that a reference station monitors the signal quality and transmits correction data to the users.

## WAAS

WAAS is a GPS navigation system with differential correction by means of geostationary satellites. Similar systems, using Satellite-Based Augmentation Systems (SBAS), are under development in Japan (MSAS: MSAT Satellite-based Augmentation System) and Europe (EGNOS: European Geostationary Navigation Overlay System). They are said to be fully interoperable and compatible. MSAS and EGNOS are expected to become fully operational in 2006 or after.



## SPECIFICATIONS

### GPS

Receiver	12 discrete channels all-in-view, C/A code
RX Frequency	L1 (1575.42 MHz)
Time to First Fix	12 s (Warm start)
Tracking Velocity	900 kt
Geodetic System	WGS-84 (NAD-27 or others selectable)
Update Rate	1 s

### Positioning Augmentation

#### DGPS

Reference Station:	Automatic or manual selection
Frequency Range:	283.5 - 325.0 kHz (all ITU regions)
Format:	RTCM SC-104 Ver 2.0 Type1, 7, 9, 16

#### WAAS

Standard fitted in display unit

### Accuracy

GPS:	10 m (95%)
DGPS:	5 m (95%)
WAAS:	3 m (95%), limited coverage
SOG:	±0.001 kt (calm sea)
COG:	±3° (SOG 1-17 kt), ±1° (SOG > 17 kt)

### Display

6" LCD (120 W, 91 H mm),  
320 (H) x 240 (V) pixels,  
L/L resolution: 0.001 min

### Display Modes

VideoPlotter, Highway, Text, Steering

### VideoPlotter

Scale: 0.02 to 320.0 nm,  
Plot Interval: 1 s - 60 min or 0.01-99.99 nm

### Memory Capacity

2,000 points for ship's track and marks, 999 waypoints with comments,  
30 routes (containing 30 waypoints/route)

### Alarms

Arrival, anchor watch, XTE, speed, time, water depth, trip, DGPS,  
WAAS

### Integrity indication

Safe, Caution, Unsafe at accuracy level of 10 m or 100 m

### Interface (IEC 61162-1 Ed 2, NMEA 0183)

Output	GBS (satellite fault), GLL (L/L), VTG (SOG, COG), ZDA(UTC), WPL (WPT location), etc.
Input	DBT (Depth), HDT (Compass), MTW (Water temperature), TLL (TGT L/L), VBW (Dual grd/wat spd), etc.

### ENVIRONMENT (IEC 60945 test method)

Temperature	Display Unit: -15°C to +55°C Antenna Unit: -25°C to +70°C
Waterproofing	Display Unit: IPX5 (IEC 60529) Antenna Unit: IPX6 (IEC 60529)
EMC	IEC 60945 Ed. 4 (up to 2 GHz)

### POWER SUPPLY

12-24 VDC, 0.8-0.4 A

### EQUIPMENT LIST

#### Standard

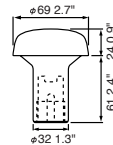
1. Display Unit (Specify single or dual)	1 unit
2. Antenna Unit GPA-017S	1 unit
3. Antenna Cable	15 m
4. Interface Cable	5 m x 2 pcs
5. Installation Materials and Spare Parts	1 set

#### Option

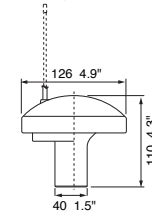
1. DGPS Receiver Kit OP20-32-1/20-33
2. Whip Antenna FAW-1.2 for GPA-018S
3. Antenna Cable, 30/50 m
4. Interface Cable, 5/10 m
5. Antenna Base CP20-01111 (Pipe mount), No.13-QA300 (Deck mount) No.13-QA310 (Offset bracket), No.13-RC5160 (Handrail mount)
6. Flush Mount Kit OP20-24/20-25
7. Interface Unit IF-2500
8. External DGPS Receiver GR-80
9. Rectifier PR-62

### Antenna Unit

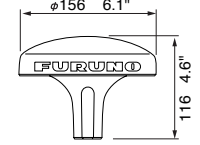
GPA-017S  
0.15 kg 0.3 lb



GPA-018S  
0.3 kg 0.7 lb

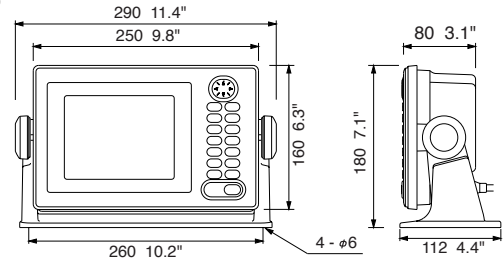


GPA-019S  
1.0 kg 2.2 lb

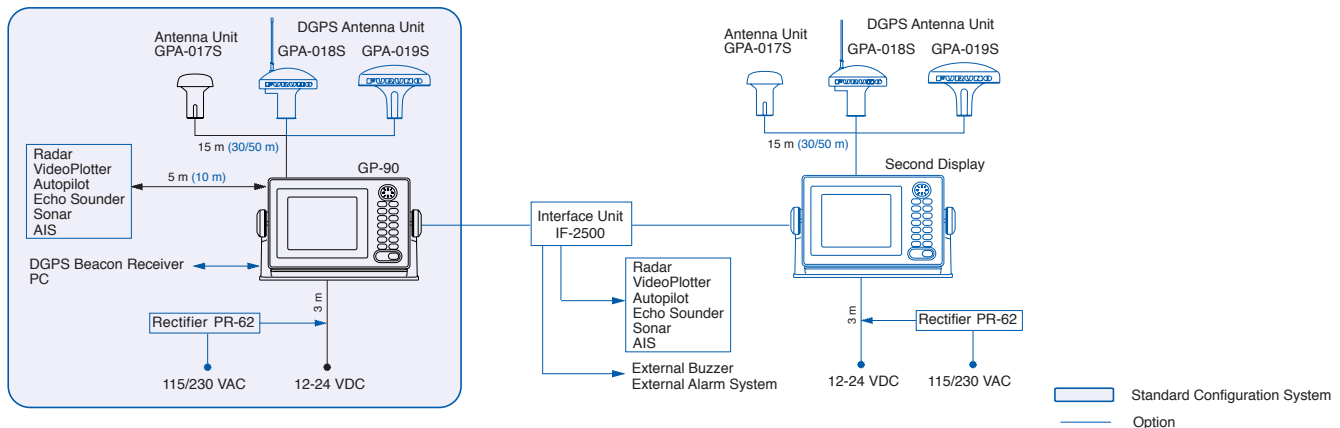


### Display Unit

2.2 kg 4.9 lb



### Interconnection Diagram



TRADE MARK REGISTERED MARCA REGISTRADA  
SPECIFICATIONS SUBJECT TO CHANGE WITHOUT NOTICE

#### FURUNO U.S.A., INC.

Camas, Washington, U.S.A.  
Phone: +1 360-834-9300  
Fax: +1 360-834-9400

#### FURUNO (UK) LIMITED

Denmead, Hampshire, U.K.  
Phone: +44 2392-230303  
Fax: +44 2392-230101

#### FURUNO FRANCE S.A.

Bordeaux-Mérignac, France  
Phone: +33 5 56 13 48 00  
Fax: +33 5 56 13 48 01

#### FURUNO ESPAÑA S.A.

Madrid, Spain  
Phone: +34 91-725-90-88  
Fax: +34 91-725-98-97

#### FURUNO DANMARK AS

Hvidovre, Denmark  
Phone: +45 36 77 45 00  
Fax: +45 36 77 45 01

#### FURUNO NORGE A/S

Ålesund, Norway  
Phone: +47 70 102950  
Fax: +47 70 127021

#### FURUNO SVERIGE AB

Västra Frölunda, Sweden  
Phone: +46 31-7098940  
Fax: +46 31-497093

#### FURUNO FINLAND OY

Espoo, Finland  
Phone: +358 9 4355 670  
Fax: +358 9 4355 6710

#### FURUNO POLSKA Sp. z o.o.

Gdynia, Poland  
Phone: +48 58 669 02 20  
Fax: +48 58 669 02 21

#### FURUNO DEUTSCHLAND GmbH

Rellingen, Germany  
Phone: +49 4101 838 0  
Fax: +49 4101 838 111

#### FURUNO EURUS LLC

Petersburg, Russia  
Phone: +7 812 767 15 92  
Fax: +7 812 766 55 52



04125N Pri0nted in Japan



# to SOLAS carriage requirements as a device and as a sensor for AIS, Radar, VDR, etc.

**Advanced Electronic Position-Fixing System (EPFS) to meet New IMO Performance Requirements and IEC Testing Standards.**



GP-150  
Display Unit

- ▶ Fully meets new IMO Resolution MSC.112(73) and IEC 61108-1 Ed.2 for SOLAS carriage requirements on and after 1 July 2003
- ▶ Ideal sensor of SOG and COG for AIS, radars, and other navigational aids
- ▶ Augmentation to enhance accuracy by standard fitted WAAS and optional DGPS
- ▶ Display modes: VideoPlotter, 3-D Highway, Text, etc.
- ▶ Memory: 2,000 points for ship's past positions and marks (incl. 99 event marks max.); 999 waypoints; 30 routes each containing up to 30 waypoints

# Increases the navigation efficiency and safety by feeding accurate positional data to AIS, Radar, INS, and many other nav aids.

**IMO performance standard MSC.112(73) and associated IEC standards are an epoch-making milestone in the radionavigation history.**

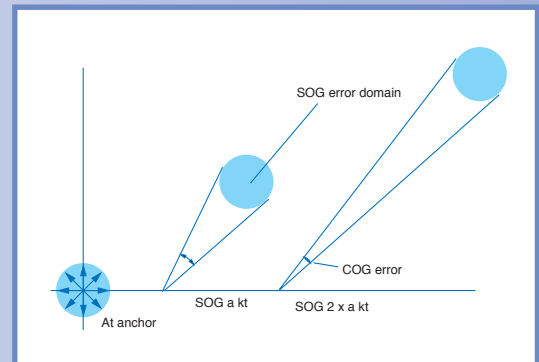
The SOLAS Chapter V as amended prohibits new installation of current GPS receivers which are designed to IMO A.819 after 1 July 2003\*. With the comparison below, you will see why we say the new IMO equipment is epoch making.\* Some Administrations may give a grace period for the current GPS receivers.

Major functionality	MSC.112(73), IEC 61108-1 ed.2	A.819(19), IEC 61108-1 ed.1
Accuracy	13 m (95%)	100 m (95%)
SOG (speed over ground)	Required to accuracy of SDME	SOG prohibited, no testing standard
COG (course over ground)	Required to accuracy of $\pm 1^\circ$ (>17 kt), $\pm 3^\circ$ (<17 kt)	COG prohibited, no testing standard
UTC	Required to output	Data is limited to only L/L
RAIM (Receiver autonomous integrity monitoring)	Required to indicate integrity indication of Safe, Caution, Unsafe at confidence level of 10 m and 100 m	No
Display update rate	1 s at latest	every 2 s

## How SOG and COG are measured?

As locations of GPS satellites in view are known, analyzing Doppler shifts from them produces the latitudinal and longitudinal components of velocities of respective moving satellites relative to a GPS receiver. Vector sum of these components provides a speed over ground (SOG). Course over ground (COG) is at the same time found as an angle of the SOG vector relative to the north.

Note COG is not a course made good (CMG) that is found by striking a segment between two locations (past and present). Accuracy of SOG is free from the moving speeds of the ship but that of COG is subject to the ship speed. The faster ship speed provides a longer vector; thus, the error of COG gets smaller. Suppose your ship is at anchor; the COG vector can be anywhere within a SOG error domain. Errors mostly results from ionospheric refraction of the GPS signals.



As the WAAS utilizes the same frequency as the GPS, a single antenna can receive GPS and WAAS signals. Currently two Inmarsat GEO satellites are available for receiving the WAAS signal: AOR-W and POR. Major contributors of an error in a single frequency GPS system are receiver clock drift and signal delays by refraction. The WAAS reference stations on the earth monitor the GPS constellation and route GPS error data to the satellites via the master earth station. The Inmarsat or communication satellite broadcasts the differential corrections to marine and aviation users.

## DGPS

Differential operation of the GPS consists of several essential elements. In a word, a reference receiver is placed at a known point (usually at radio beacon stations). It compares the known location with that predicted by the GPS reference receiver producing correction data. This data is broadcast in MSK modulated signals within the beacon band. The differential beacon receiver on ship receives and demodulates the signals, applying the correction data to the GPS receiver.

